

USDA  
ACCEPTED

# Education

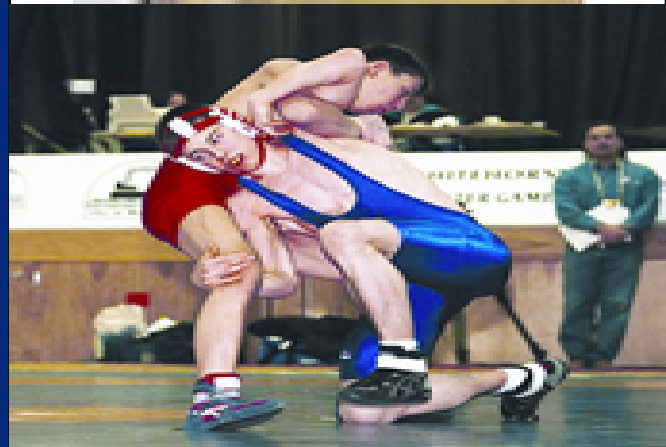
EPA  
REGISTERED

## Healthy School Environments, Healthy People

Make Effective Hygiene Part of Your Lesson Plan. Schools in the United States are recognized as some of the finest in the world, yet thousands of students and teachers are absent for a variety of reasons; including illness. With over 144 million lost school days per year due to illness, it is easy to see why it is so important to control absenteeism.

Effective hand hygiene is critical. Surfaces are cleaned then touched repeatedly between cleanings and hand washings. Take a proactive approach to prevent contamination of both porous and non-porous surfaces between cleanings with **BioShield<sup>®</sup> 75**. **BioShield<sup>®</sup> 75** is safe to use and works continuously to provide an invisible biostatic protective film to prevent the growth of bacteria, fungi, mold and mildew.

**BioShield<sup>®</sup> 75** is Water Based, EPA Registered, USDA Accepted on food contact surfaces, Odorless and Colorless. **BioShield<sup>®</sup> 75** provides protection for a broad range of surfaces. It is Highly Durable, Non-Toxic once dry, and prevents Biofilm Buildup. **BioShield<sup>®</sup> 75** can be wiped, sprayed or misted on virtually any surface and uses a mechanical method of efficacy. When used in conjunction with effective hygiene programs, schools and other facilities will have the most effective way to stop the spread of illness causing germs.



**Treat Rate**
**Priority**
**Touch Points**
**BioShield<sup>®</sup>75 Survey Checklist**

<b>Continuous Touch</b> Treat Every 30 Days	<b>Priority 1</b> These Touch Points are high touch areas where contact is made several times per day by numerous people.	<ul style="list-style-type: none"> <li>•Mobile or Cell Phones</li> <li>•Cleaning Cart Handles</li> <li>•Computer Keyboards</li> <li>•Door Handles</li> <li>•Wrestling Mats</li> <li>•School Restrooms</li> <li>•Cafeteria Counter Tops</li> <li>•Desk Tops</li> <li>•Toilet Handles</li> </ul>
<b>Frequent Touch</b> Treat Every 90 Days	<b>Priority 2</b> These Touch Points are areas that are touched daily.	<ul style="list-style-type: none"> <li>•Light Switches</li> <li>•Stationary Telephones</li> <li>•Gymnasium Equipment</li> <li>•Buckets &amp; Wringers</li> <li>•Mop Handles</li> <li>•Cafeteria utensils</li> <li>•Water/Drinking Fountains</li> <li>•Playground Equipment</li> </ul>
<b>Seldom Touch</b> Treat Annually	<b>Priority 3</b> These Touch Points are in areas that are touched weekly.	<ul style="list-style-type: none"> <li>•Window Treatments</li> <li>•Internal Shelves &amp; Walls</li> <li>•Vacuum Equipment</li> <li>•Carpets And Upholstery</li> <li>•Whiteboards</li> <li>•Storage Areas &amp; Closets</li> </ul>
<b>Rarely Touch</b> Treat Every Three Years	<b>Priority 4</b> These Touch Points are rarely to never touched.	<ul style="list-style-type: none"> <li>•HVAC Registers - Ducts</li> <li>•Enclosed Areas</li> <li>•Drywall</li> <li>•Wall Hangings</li> <li>•Ceilings</li> <li>•Walls</li> </ul>

This BioShield<sup>®</sup>75 Facility Touch Points checklist is a tool to aid in the environmental evaluation process of your facility. It will help you determine how objects in an environment are handled, how often they are touched and by how many people. It will also help you schedule the re-treatment of BioShield<sup>®</sup>75 to insure appropriate protection for all items and areas within your facility.

Every environment is unique so it is important to understand the schedule of reapplying BioShield<sup>®</sup>75 based upon the way each specific environment is utilized.

During the application process it is important that the EPA recommendations for usage be followed strictly according to label guidelines. If you need a copy of the EPA guidelines, please request those from your Geerpres representative.

**RLU:** Relative Light Unit, this is the number from your Luminometer meter reading if used.

**Please Note:** Areas that experience aggressive and heavy wear may need weekly treatment.

**Facility Touch Point Checklist**
*Please list priority 1 & priority 2 items for your facility*

Priority	Area/Item	Checked	RLU	Priority	Area/Item	Checked	RLU

To Order BioShield<sup>®</sup>75 please call 1.800.253.0373

